

Atlas Copco

Assembly Control THIN



Intro to the Project

AC Node Range



AC Node 2

- 21,5" FULL HD (1920x1080) aspect ratio 16:9
- **OS Windows**
- first time AC Nodes will support **ProfiNet and Fieldbus applications**
- Furthermore all performance figures are improved compare to first generation



AC Thin Client

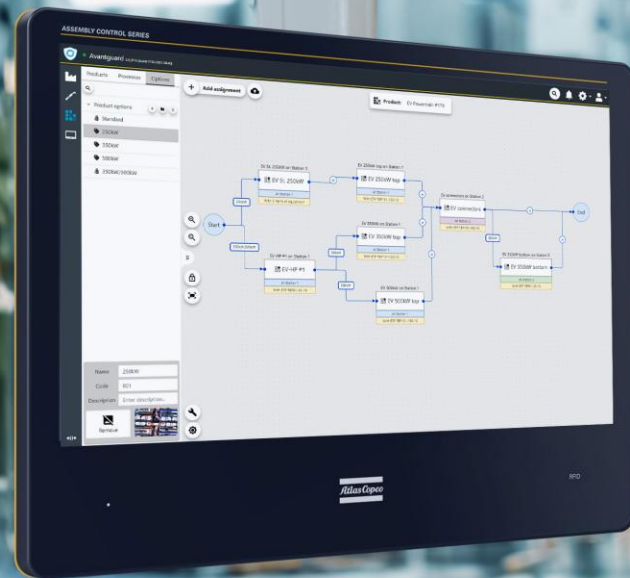
- 21,5" FULL HD (1920x1080) aspect ratio 16:9
- **OS Linux**
- reduced features and lower power consumption at a lower price
- run web front-end applications like Avantguard or the Industrial Location system



AC Mini

- 10,1" Mini PC
- **OS Windows**
- IP65 sealed M12 connectors for all interfaces
- close a critical gap in the display portfolio.
- semi-automatic fixtured tightening applications like U-bolt assembly or wheel assembly

Complements web-based applications



ASSEMBLY CONTROL *THIN*



High-resolution, impact-resistant display

Integrated user identification

Quad core ARM processor

Yocto based Linux OS

ASSEMBLY CONTROL *THIN*

1 x Gbit Ethernet

1 x 100 MBit Ethernet

2 x USB 2.0 connector



Digital I/O w. 24VDC aux.

External service USB connector

1 x RS232 serial connector

Bluetooth 5.1 / Wi-Fi 6 via accessory USB dongle

ASSEMBLY CONTROL *THIN*

What's in the box?

ARM® Cortex® –
4 x A53 / 1 x M4

Quad core processor



Reduction of space
consumption



via accessory dongle



Operating system



2 x USB Type A



auxiliary 24V out
2 x OUT
2 x IN

IP54 certified

Reliable even in the most demanding environments

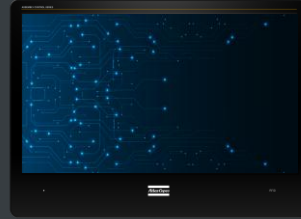
IP
5 4

Dust Protected

Splashing of Water



Facts and Figures



**Assembly Control
Thin**



**Assembly Control
Thin Legic**

Display

21.5" Full HD (1920 x 1080);
aspect ratio 16:9

21.5" Full HD (1920 x 1080);
aspect ratio 16:9

Processor

4x Arm®Cortex®-A53 @1,6
GHz, 1x Arm®
Cortex®-M4 @400 MHz, 2D
GPU und 3D GPU

4x Arm®Cortex®-A53 @1,6
GHz, 1x Arm®
Cortex®-M4 @400 MHz, 2D
GPU und 3D GPU

RAM

4 GB DDR4-2400 64Bit

4 GB DDR4-2400 64Bit

Disc Space

eMMC 32 GByte

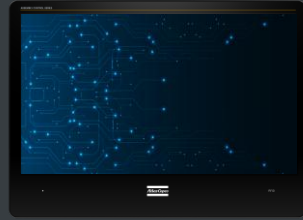
eMMC 32 GByte

Power Supply

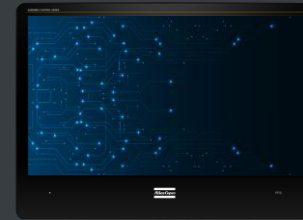
100-240V AC

100-240V AC

Facts and Figures



**Assembly Control
Thin**



**Assembly Control
Thin Logic**

| Interfaces | | |
|-------------------------|--------------------------------|--------------------------------|
| 2 x USB 2.0 | X | X |
| 2 x Digital I/O | X | X |
| 1 x 24V DC aux. out | X | X |
| 1 x Gbit Ethernet | X | X |
| 1 x 100MBit Ethernet | X | X |
| 1 x external USB IP54 | - | X |
| 1 x serial port (RS232) | - | X |
| 1 x CAN port (RS485) | X | X |
| Operating system | Linux | Linux |
| Protection Class | IP 54, Impact Resistance: 20 J | IP 54, Impact Resistance: 20 J |
| Cooling Concept | Passive | Passive |